

# Steel fireplace MBM right 10 kW Ø 200 Lift- up Bent glass

SKU: MBM/P/BS/G/SG EAN: 5901350031421



## Technical data

### General data

|  |                       |
|--|-----------------------|
| Version  | <b>Prawy gilotyna</b> |
| Rated output (kW)                                | <b>10</b>             |
| Heating power range (kW)                         | <b>4.5 - 12.5</b>     |
| Heating efficiency (%)                           | <b>81</b>             |
| Exhaust gas temperature (°C)                     | <b>235</b>            |
| Max length of logs (cm)                          | <b>50</b>             |
| Min inlet grids active field (cm <sup>2</sup> )  | <b>≥500</b>           |
| Min outlet grids active field (cm <sup>2</sup> ) | <b>≥700</b>           |
| Flue outlet diameter (mm)                        | <b>200</b>            |
| Color  | <b>Black</b>          |
| Self Closure                                     | <b>No</b>             |
| Materials  | <b>Steel</b>          |
| Door opening direction                           | <b>Left, Up</b>       |

### Energetic efficiency

|  |               |
|--|---------------|
| Energy class                                       | <b>A</b>      |
| Energy efficiency index (EEI)                      | <b>106.71</b> |
| Moc cieplna do ogrzewania pomieszczeń (kW)         | <b>10</b>     |
| CO emissions (at 13% O <sub>2</sub> ) ≤ given in % | <b>0.1</b>    |
| Dust emission (mg/Nm <sup>3</sup> )                | <b>28</b>     |

## Certifications / Compliance

Meets requirements

**KRATKI PRO, Ecodesign,  
Designed for recuperation,  
BlmSchV 2**

## Additional information

Design features

**Air intake - built in ,  
Combustion chamber  
lining, Decorative glass**

Front type

**Steel front with bent  
painted glass**

Type of fuel

**Seasoned deciduous wood  
(humidity ≤20%)**

EAN

**5901350031421**

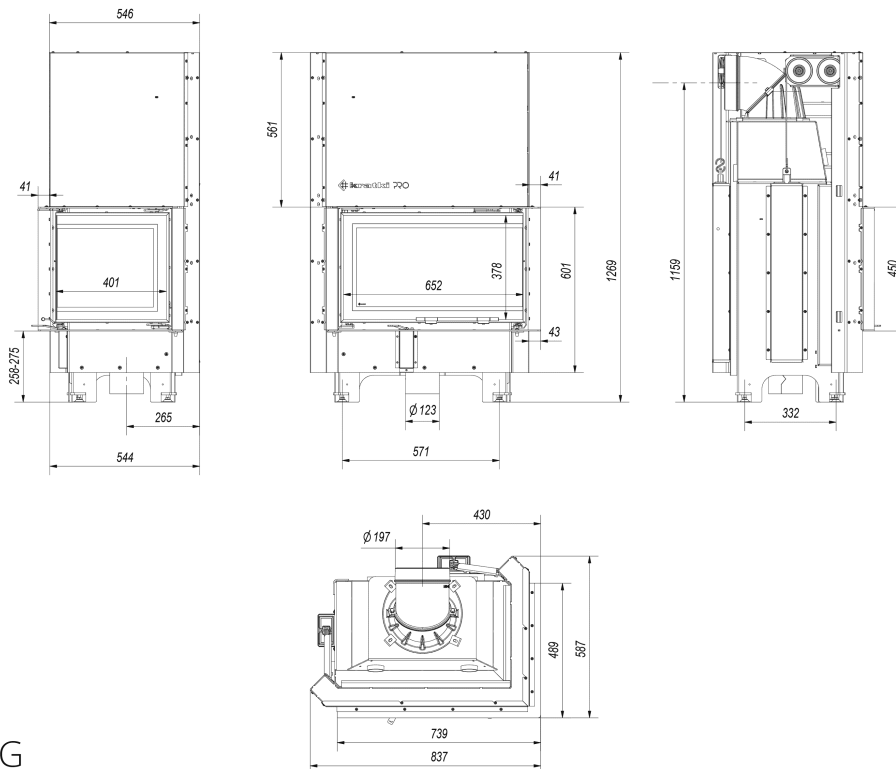
## Physical parameters

Width (cm) **83.7**

Height (cm) **126.9**

Depth (cm) **54.6**

Weight (kg) **244**



MBM/P/BS/G/SG