

# Steel fireplace NADIA 13 kW Ø 200 double glass

SKU: NADIA/13/DG EAN: 5901350079416



## Technical data

### General data

Rated output (kW)	<b>13</b>
Heating power range (kW)	<b>6.0 - 16.5</b>
Heating efficiency (%)	<b>81</b>
Exhaust gas temperature (°C)	<b>240</b>
Max length of logs (cm)	<b>40</b>
Min inlet grids active field (cm <sup>2</sup> )	<b>≥700</b>
Min outlet grids active field (cm <sup>2</sup> )	<b>≥900</b>
Flue outlet diameter (mm)	<b>200</b>
Materials	<b>Steel</b>
Door opening direction	<b>Left</b>

### Energetic efficiency

Energy class	<b>A</b>
Energy efficiency index (EEI)	<b>106.71</b>
Moc cieplna do ogrzewania pomieszczeń (kW)	<b>13</b>
CO emissions (at 13% O <sub>2</sub> ) ≤ given in %	<b>0.09</b>
Dust emission (mg/Nm <sup>3</sup> )	<b>37</b>

## Certifications / Compliance

Meets requirements

**KRATKI PRO, Ecodesign,  
Designed for recuperation,  
BlmSchV 2**

## Additional information

Design features

**Air intake - built in ,  
Combustion chamber  
lining, Decorative glass**

Type of fuel

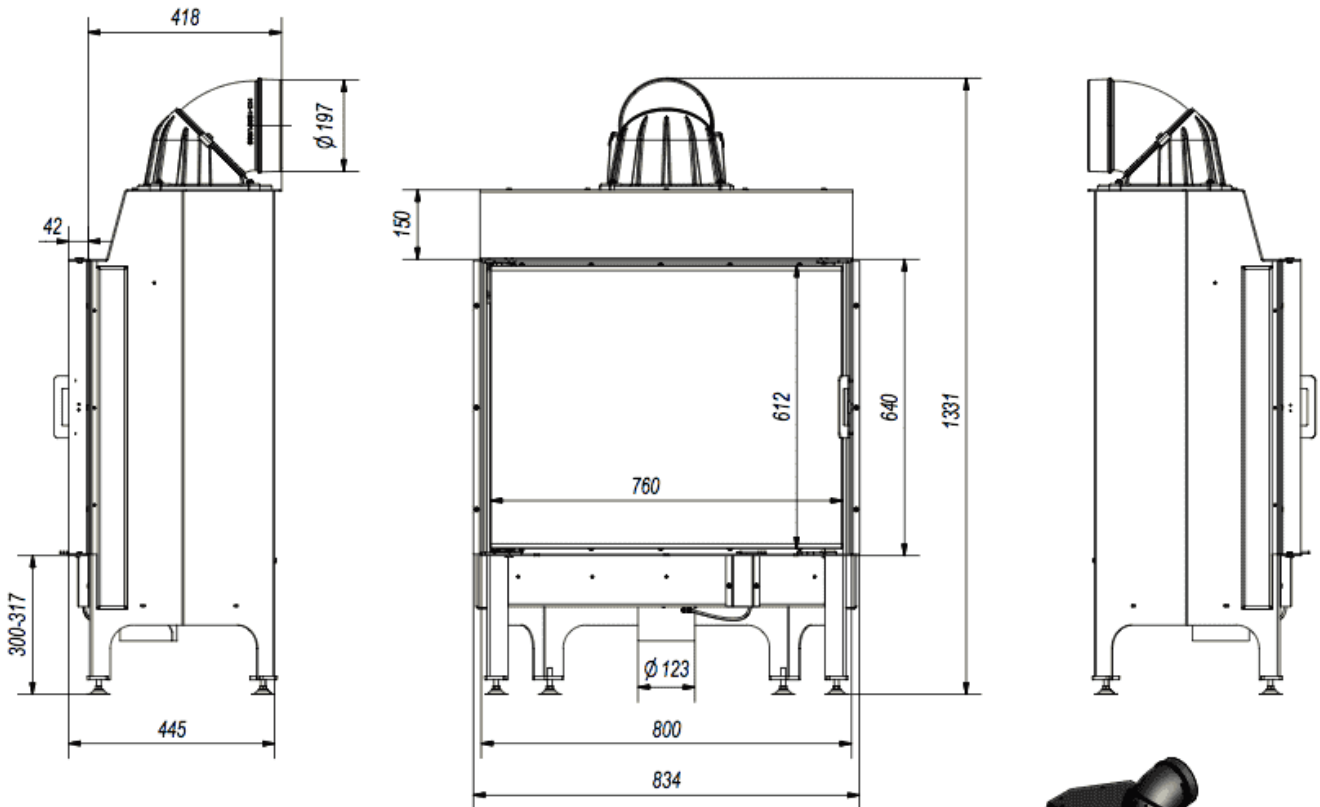
**Seasoned deciduous wood  
(humidity ≤20%)**

EAN

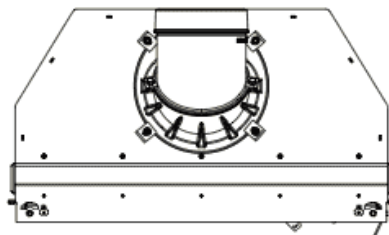
**5901350079416**

## Physical parameters

Width (cm)	<b>83.4</b>
Height (cm)	<b>133.1</b>
Depth (cm)	<b>41.8</b>
Weight (kg)	<b>178</b>



NADIA/13



NADIA/13